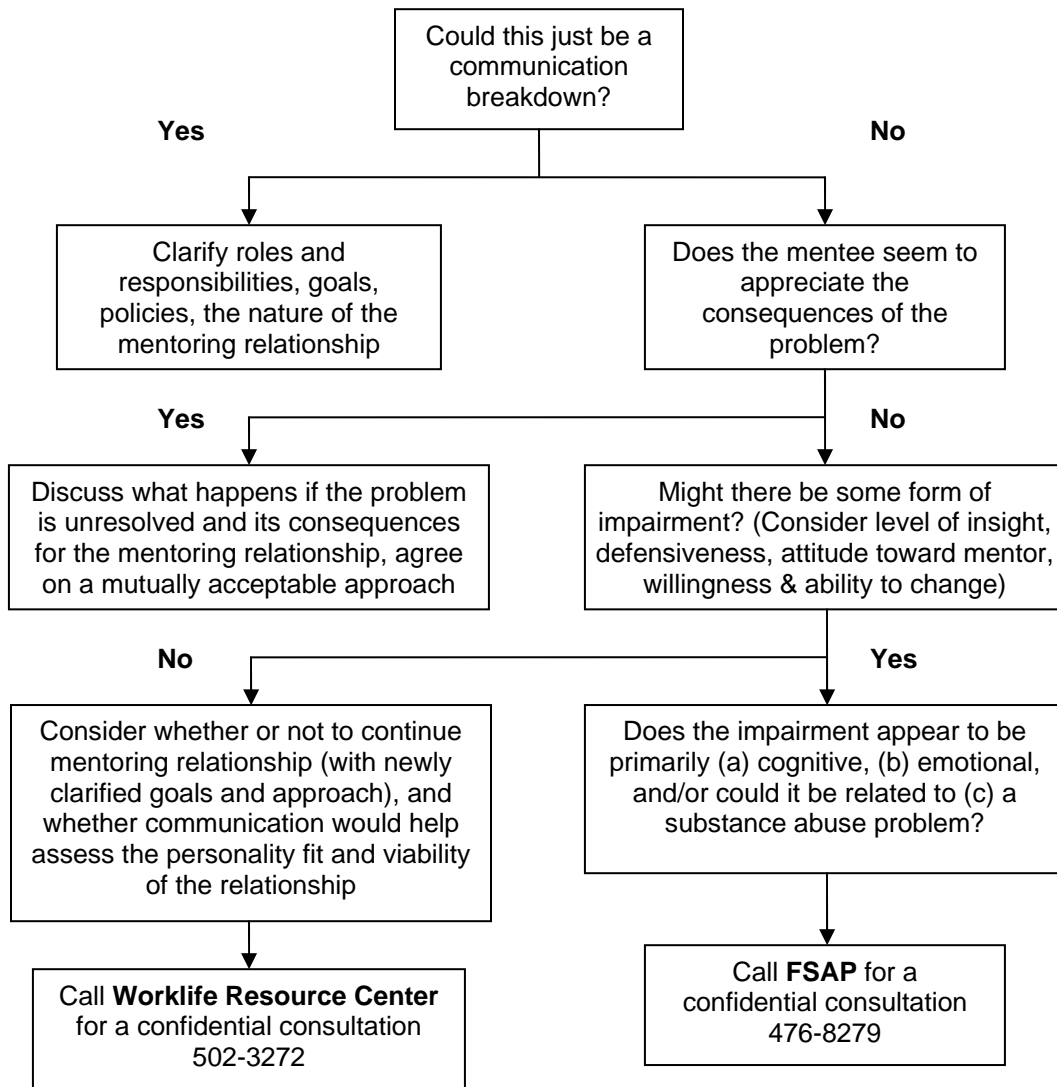


Decision Tree For Dealing with Difficult Mentoring Situations

Situation: As a faculty mentor, you find yourself dealing with an unusually challenging relationship with a mentee. Your usual approach doesn't seem to be working and either their performance is far off what you would expect and/or their behavior has proved especially problematic to deal with and is becoming a serious obstacle. The following decision tree is intended to guide your thinking as you try to determine what kind of problem you are facing and how best to approach it, including when to consult with the Faculty & Staff Assistance Program (FSAP) or the Worklife Resource Center.



UCSF Faculty & Staff Assistance Program (FSAP)
In collaboration with the
Mentor Development Program (MDP)
And
Worklife Resource Center